



# 2009 SAILING INSTRUCTIONS

## 48<sup>th</sup> Annual Tuesday Night Sundown Series



**This SI is Current as of 6/14/2009, Corrected GPSC B Mark Lat/Lon**

**\*\* Section 1 INSTRUCTIONS ARE REQUIRED BY THE U.S. COAST GUARD \*\***

- 1.1 **All Competitors shall not interfere with commercial shipping transiting the racing area at any time.**
- 1.2 When code flag "F" is displayed by the race committee, on shore or boat, the shipping channel downstream of government buoy "G1" shall become a restricted area before the time the boat has started or completed the first leg of its course.
- 1.3 Any boat inside the restricted area when the code flag "F" is displayed shall immediately exit this restricted area.
- 1.4 Any boat not complying with 1.1, 1.2 or 1.3 may be subject to protest by the race committee and may be reported to the Coast Guard.
- 1.5 Infraction of 1.1, 1.2 or 1.3 is not subject to protest by another boat (this changes RRS 60.1)

### 2.1 RULES

The races will be governed by rules as defined in the current "Racing Rules of Sailing" (RRS) or as modified by the Sailing Instructions (SI).

- 2.2 When there is conflict, the "Sailing Instructions" (SI) shall prevail over the notice of race (this changes RRS 63.7)

### 3.1 SIGNALS MADE ASHORE BY RACE COMMITTEE

Signals made ashore will be displayed at the race committee end of the starting line located at the East corner of Grosse Pointe Park Windmill Pointe Marina.

3.2	<u>Shipping Channel</u>	"F" flag(red diamond on white Field)	SIREN
	<u>Off Limits</u>	<u>SI section #1 is in effect while flag is up</u>	When Lowered, SIREN
	<u>Shortened course</u>	"S" flag(blue rectangle on white field) will be displayed before the Preparatory signal of any class that it applies to. (this changes RRS 32)	2 long sounds
	<u>Recall signal</u>	"X" (blue cross on white field) flag for individual recall	1 sound
	<u>Postponement signal</u>	"AP" pennant(3 red, 2 white vertical bars on triangular pennant) races not started are postponed. The warning signal will be made 1 minute after removal	2 sounds
	<u>Abandonment signal</u>	"N" flag(blue and white checkerboard pattern) all races are abandoned, return to the starting area. The warning signal will be made 1 minute after removal "N over A"(vertical blue and white swallowtail) flags, all races abandoned, no more racing today	3 sounds 3 sounds

### 4.1 FORMAT OF RACING

The Sundown Series is comprised of TWO (2) series of SIX (6) races each.

- 4.2 Races are run on Tuesday evenings:

**Spring Series:** May 26 to June 30 **Summer Series:** July 7, 14, August 11, 18, 25, September 1

4.3 CLASS	STANDARD	SHORTENED
<u>START 1</u>	PHRF A (to PHRF 138)	Course 1
<u>START 2</u>	PHRF B (PHRF 141 and above)	Course 2
<u>START 3</u>	JAM	Course 2
	Match Race	Course 3
<u>START 4</u>	Cruising Class	Course 3
<u>START 5</u>	Express 27	Course 1
<u>START 6</u>	CAL 25	Course 2
<u>START 7</u>	CRESCENT	Course 3
		Course 3
		Course 4

### 5.1 RACING AREA

Table A , "Approximate Latitude and Longitude of Course Marks" and Addendum A, '2009 GPSC Sundown Series Course', show the location and layout of course buoys and their approximate Latitude and Longitude. The race area is in the South Western portion of Lake St. Claire.

**5.2 Classes are assigned to sail the race courses as follows:**

**\*\* Headings are approximate magnetic bearing and distances are approximate nautical miles.**

**MOST MARKS TO PORT (Red flag or shape displayed):**

COURSE #1 Distance = 6.5 NM					COURSE #2 Distance = 5.1 NM				
BRG	DIST	TO	Buoy Color	MARK TO	BRG	DIST	TO	Buoy Color	MARK TO
071°	1.2	GPSC-A	YELLOW	STBD	071°	1.2	GPSC-A	YELLOW	STBD
125°	0.9	GPSC-E	WYC Strobe	PORT	125°	0.9	GPSC-E	WYC Strobe	PORT
017°	1.6	GPSC-C	ORANGE	PORT	353°	1.0	GPSC-B	ORANGE	PORT
239°	2.8	FINISH	ORANGE		245°	2.0	FINISH	ORANGE	

COURSE #3 Distance = 4.2 NM					COURSE #4 Distance = 2.4 NM				
BRG	DIST	TO	Buoy Color	MARK TO	BRG	DIST	TO	Buoy Color	MARK TO
065°	2.0	GPSC-B	ORANGE	PORT	071°	1.2	GPSC-A	YELLOW	PORT
289°	0.5	GPSC-D	ORANGE	PORT	251°	1.2	FINISH	ORANGE	
232°	1.6	FINISH	ORANGE						

**MOST MARKS TO STARBOARD (Green flag or shape displayed):**

COURSE #1 Distance = 6.5 NM					COURSE #2 Distance = 5.1 NM				
BRG	DIST	TO	Buoy Color	MARK TO	BRG	DIST	TO	Buoy Color	MARK TO
059°	2.8	GPSC-C	ORANGE	STBD	065°	2.0	GPSC-B	ORANGE	STBD
197°	1.6	GPSC-E	WYC Strobe	STBD	173°	1.0	GPSC-E	WYC Strobe	STBD
305°	0.9	GPSC-A	YELLOW	PORT	305°	0.9	GPSC-A	YELLOW	PORT
251°	1.2	FINISH	ORANGE		251°	1.2	FINISH	ORANGE	

COURSE #3 Distance = 4.2 NM					COURSE #4 Distance = 2.4 NM				
BRG	DIST	TO	Buoy Color	MARK TO	BRG	DIST	TO	Buoy Color	MARK TO
052°	1.6	GPSC-D	ORANGE	STBD	071°	1.2	GPSC-A	YELLOW	PORT
109°	0.5	GPSC-B	ORANGE	STBD	251°	1.2	FINISH	ORANGE	
245°	2.0	FINISH	ORANGE						

**Course Tables**

- 5.3** Courses will not be shortened after the start. This changes rule 32.1
- 5.4** Legs of the courses will not be changed from the Course Tables. This changes rule 33
- 5.5** GPSC Marks, with the exception of "GPSC E", are floating inflatable buoys of the color described in the Course Tables
- 5.6** GPSC E mark uses the Windsor Yacht Club "B" mark which is a white spar buoy with strobe

**6.1 THE START**

- Races will be started by using RRS rule 26 with the first warning signal at or about **1855 hours**.
- 6.2** NUMERAL PENNANTS corresponding to the start number will be used as CLASS FLAGS
- 6.3** Races will be started by using rule 26 with the warning signal made 5 minutes before the starting signal.
- 6.4** Times shall be taken from the visual signals; the absence or error of a sound signal shall be disregarded.
- 6.5** The starting line will be between the flagpole displaying the RC flag near the upstream corner of the Grosse Pointe Park marina seawall and a floating orange inflatable or rigid buoy.
- 6.6** A restricted area lies between the Starting Line and a line from a GREEN Flag on the Dock and a GREEN floating flag or shape in the water. Any boat entering this area between the first warning signal of the day and their class warning signal shall be subject to protest by the race committee. Infraction of this rule is not subject to protest by another boat. (This changes rule RRS 60.1)

**7 THE FINISH**

The finish line will be between the flagpole on the upstream corner of the Grosse Pointe Park marina seawall and a floating inflatable or rigid orange buoy.

**8.1 TIME LIMITS**

The time limit for all classes to complete their course, as required by rule 28.1, is 2 hours.

- 8.2** Boats failing to finish within one (1) hour after the first boat in their class finishes, as required by rule 28.1, shall be scored 'Did Not Finish'(DNF). (This changes rules 35, A4 and A5)

## **9.1 PROTESTS AND REQUESTS FOR REDRESS**

Protest forms are available on line at [www.gpsc.org](http://www.gpsc.org) or, until they have left, from the GPSC RC committee located on the start/finish line on the evening of the race.

**9.2** Protests and requests for redress or reopening shall be delivered to the dockside Race Committee staff or the Grosse Pointe Park Windmill Point guardhouse within the appropriate time limit.

**9.3** For each class the protest time limit is 2 hours after finishing or the time limit has expired (reference RRS 61.3).

**9.4** The time and place of protest hearings, if any, will be posted on [www.gpsc.org](http://www.gpsc.org). The intention is to get them up within 48 hours of the completion of each race.

## **10.1 SCORING**

Each series standings will be determined by high point totals and scored according to the following, which will be awarded for each race:

STARTING and FINISHING: **1 Point**

EACH BOAT DEFEATED: **1 Point**

DSQ, DNF, OCS, BFD, DNE: **0 Points**, but count as boats defeated for the purpose of scoring other boats in the race

**10.2** Points will be totaled separately for each 6 race series.

**10.3** There will be one "throw out" race per race series.

**10.4** A missed series race will be used as the 'throw out' race for totaling the final score

**10.5** Ties for awards will be resolved using the methods set forth in RRS A8.

**10.6** For each class in a series; first, second, and third place flags will be awarded for classes having 5 or more boats registered, first and second place flags for classes having 4 boats registered, and a first place flag for classes having less than 4 boats registered.

## **11 RETIRING FROM THE RACE**

A boat that retires from a race shall notify the race committee as soon as possible. The race committee operates on channel 68 and can be contacted on this channel when able to do so, pending performance of other tasks.

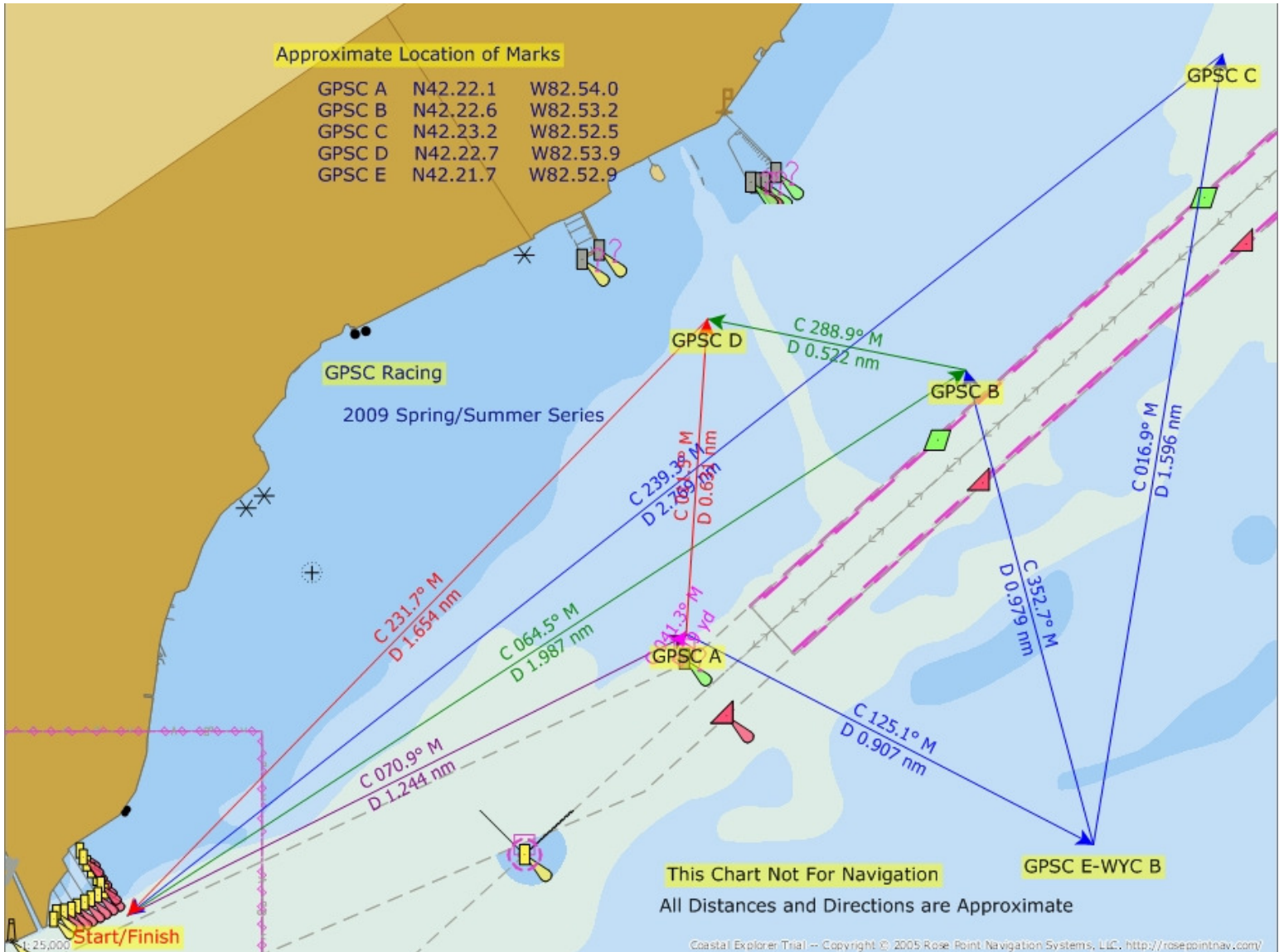
## **12 RADIO COMMUNICATION**

The Race Committee communicates with the Mark Set and Patrol boat on Channel 68. The start sequence countdown may be broadcast on this channel. 2009 GPSC Sundown Series SI 6.4 still applies in all cases.

GPSC A	N42.22.1	W82.54.0
GPSC B	N42.22.6	W82.53.2
GPSC C	N42.23.2	W82.52.5
GPSC D	N42.22.7	W82.53.9
GPSC E	N42.21.7	W82.52.9

Table A

Approximate Latitude and Longitude of Course Marks



## Addendum A

2009 GPSC Sundown Series Course